

Planos y detalles técnicos de la espuma intumescente CFS-F FX



• Applications for SINGLE AND CABLE BUNDLES

Single and cable bundles

- | | |
|------------------------------------------------------------------------|-------------------|
| • 150 mm flexible wall (max opening size 600x600 or \varnothing 600) | CAB-FW-BD-0069 |
| • 200 mm flexible wall (max opening size 600x600 or \varnothing 600) | CAB-FW-BD-0075/78 |
| • 150 mm rigid wall (max opening size 600x600 or \varnothing 600) | CAB-RW-BD-0084 |
| • 200 mm rigid wall (max opening size 600x600 or \varnothing 600) | CAB-RW-BD-0090/93 |
| • 150 mm rigid floor (max opening size 400x400 or \varnothing 400) | CAB-RF-BD-0099 |
| • 200 mm rigid floor (max opening size 400x400 or \varnothing 400) | CAB-RF-BD-0105 |

Single cables

- | | |
|------------------------------------------------------------------------|----------------|
| • 150 mm flexible wall (max opening size 600x600 or \varnothing 600) | CAB-FW-SG-0072 |
| • 150 mm rigid wall (max opening size 600x600 or \varnothing 600) | CAB-RW-SG-0087 |
| • 200 mm rigid floor (max opening size 400x400 or \varnothing 400) | CAB-RF-SG-0102 |

• Todos los planos están disponibles en DWG (bajo demanda) en DWG para copiar directamente en sus especificaciones.



CONTENTS

Single and cable bundles in a flexible wall

ID

CAB-FW-BD-0075

FIRESTOP FOAM

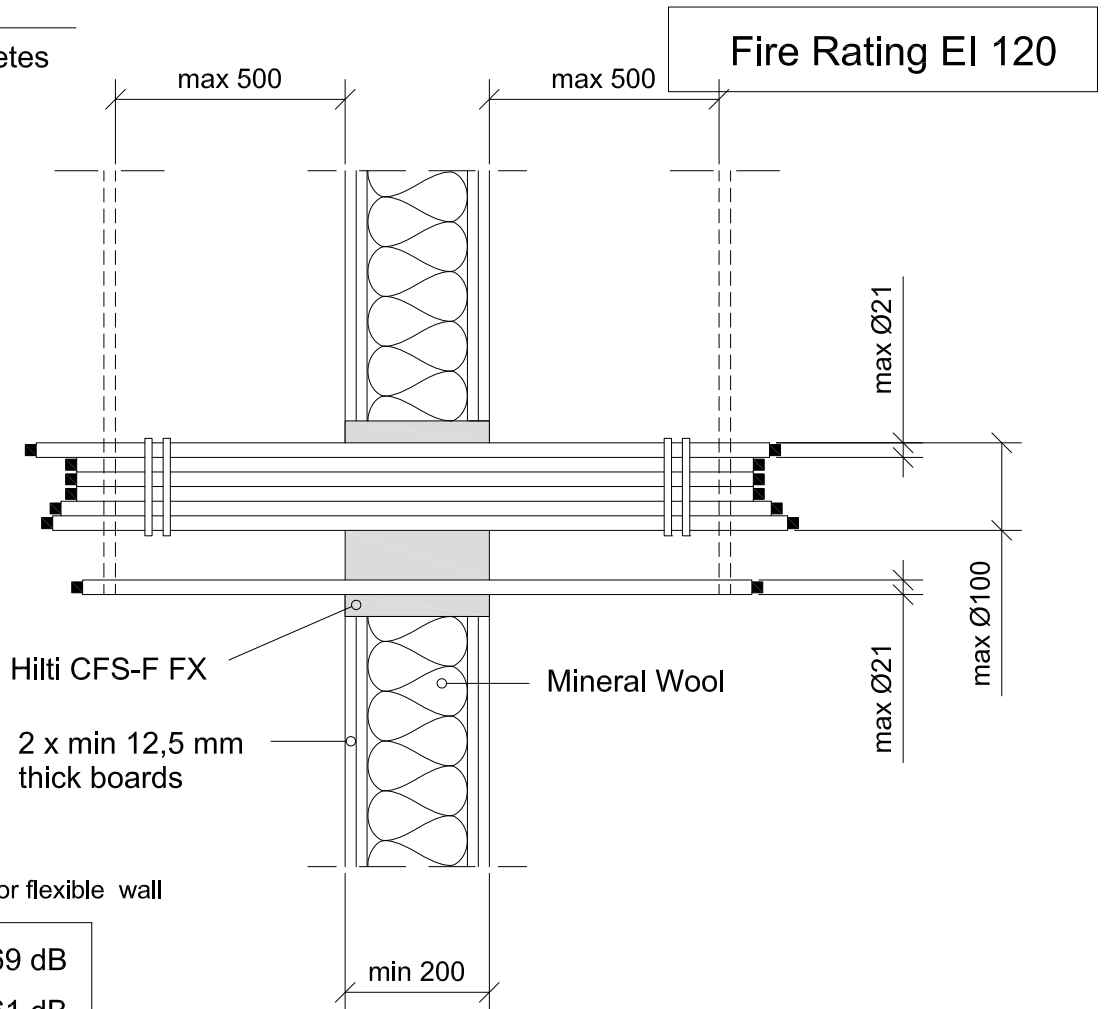
0075_01

REV

00

No scale

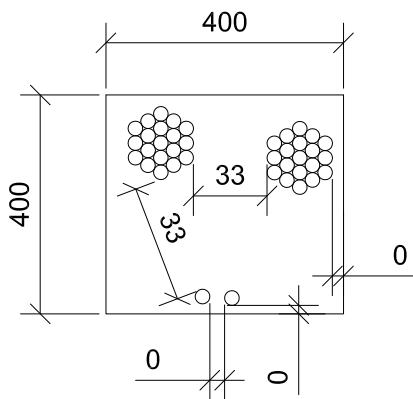
All units are in millimetres



Sound Insulation for flexible wall

$D_{n,w} = 69 \text{ dB}$
$R_w = 61 \text{ dB}$

- Approval ETA-10/0109 of 11/04/2014
- Reaction to fire acc EN 13501-1
- Fire resistance test acc 1366-3
- Installation according to Hilti instructions



Max. opening 400x400 or Ø 400 mm
Total amount of services(including insulation) is equal or lower than 60 % of the penetration surface.



CONTENTS

Single and cable bundles in a flexible wall

ID

CAB-FW-BD-0078

FIRESTOP FOAM

0078_01

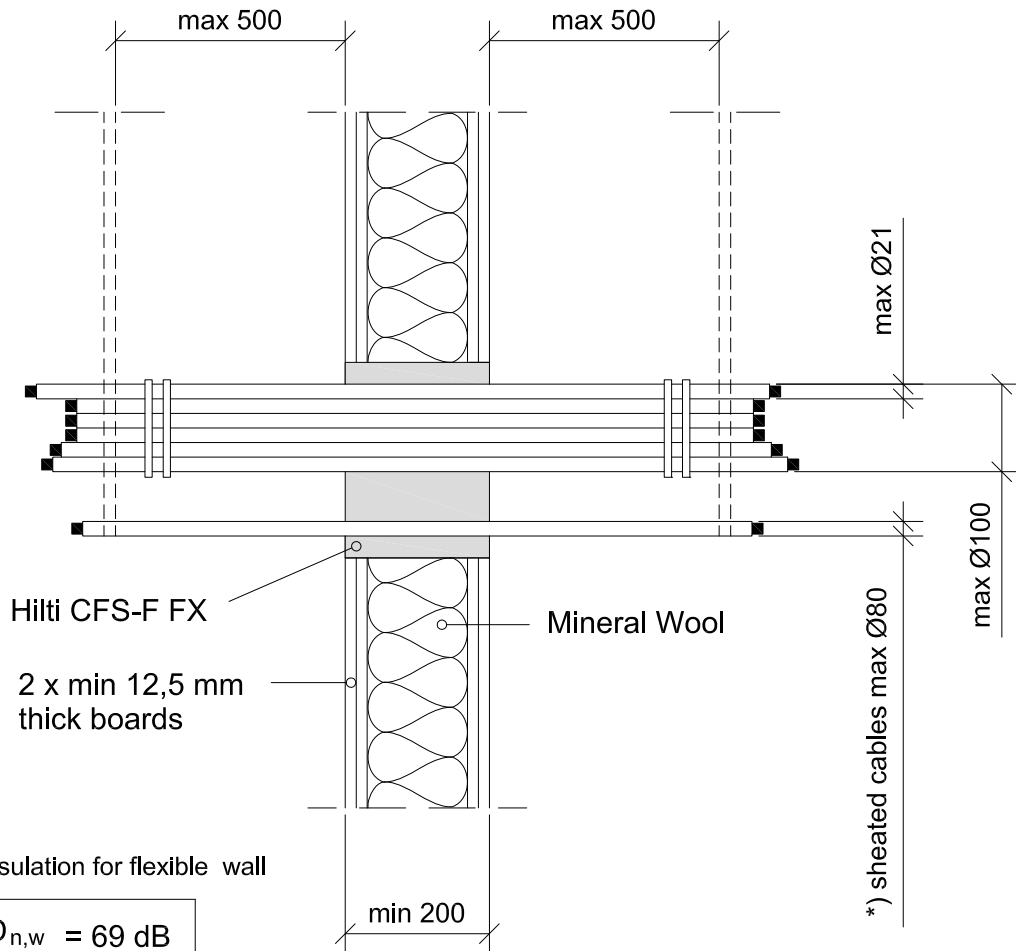
REV

00

No scale

All units are in millimetres

Fire Rating EI 90

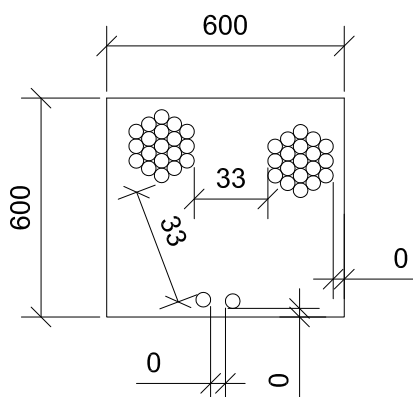


Sound Insulation for flexible wall

$D_{n,w} = 69 \text{ dB}$

$R_w = 61 \text{ dB}$

*) Valid also for all sheathed single core cables (max Ø21) and non sheathed cables (max Ø24)



- Approval ETA-10/0109 of 11/04/2014
- Reaction to fire acc EN 13501-1
- Fire resistance test acc 1366-3
- Installation according to Hilti instructions

Max. opening 600x600 or Ø 600 mm

Total amount of services (including insulation) is equal or lower than 60 % of the penetration surface.



CONTENTS

Single cables in a flexible wall

ID

CAB-FW-SG-0072

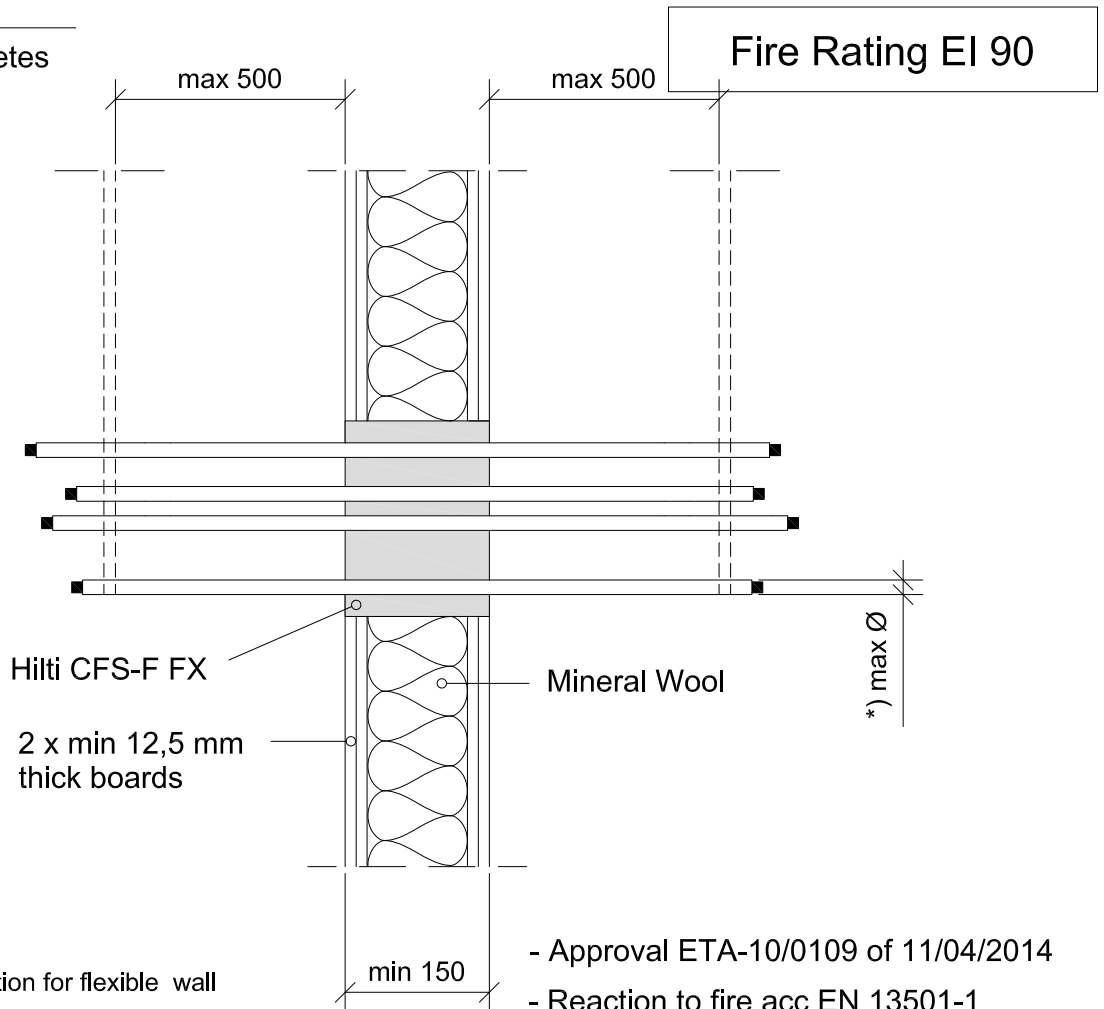
FIRESTOP FOAM

0072_01

REV 00

No scale

All units are in millimetres



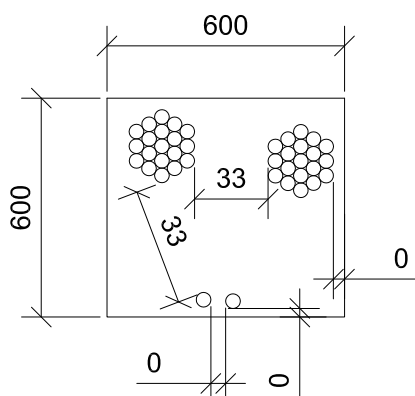
Sound Insulation for flexible wall

$D_{n,w}$	= 69 dB
R_w	= 61 dB

- Approval ETA-10/0109 of 11/04/2014
- Reaction to fire acc EN 13501-1
- Fire resistance test acc 1366-3
- Installation according to Hilti instructions

*) Type and Ø cables

Ø max single sheated core cable	21
Ø max single multi-core halogen free cables acc HD 604.5	50
Ø max single multi-core rubber cables acc HD 22.4	80



Max. opening 600x600 or Ø 600 mm

Total amount of services (including insulation) is equal or lower than 60 % of the penetration surface.



CONTENTS

Single and cable bundles in a rigid wall

ID

CAB-RW-BD-0084

FIRESTOP FOAM

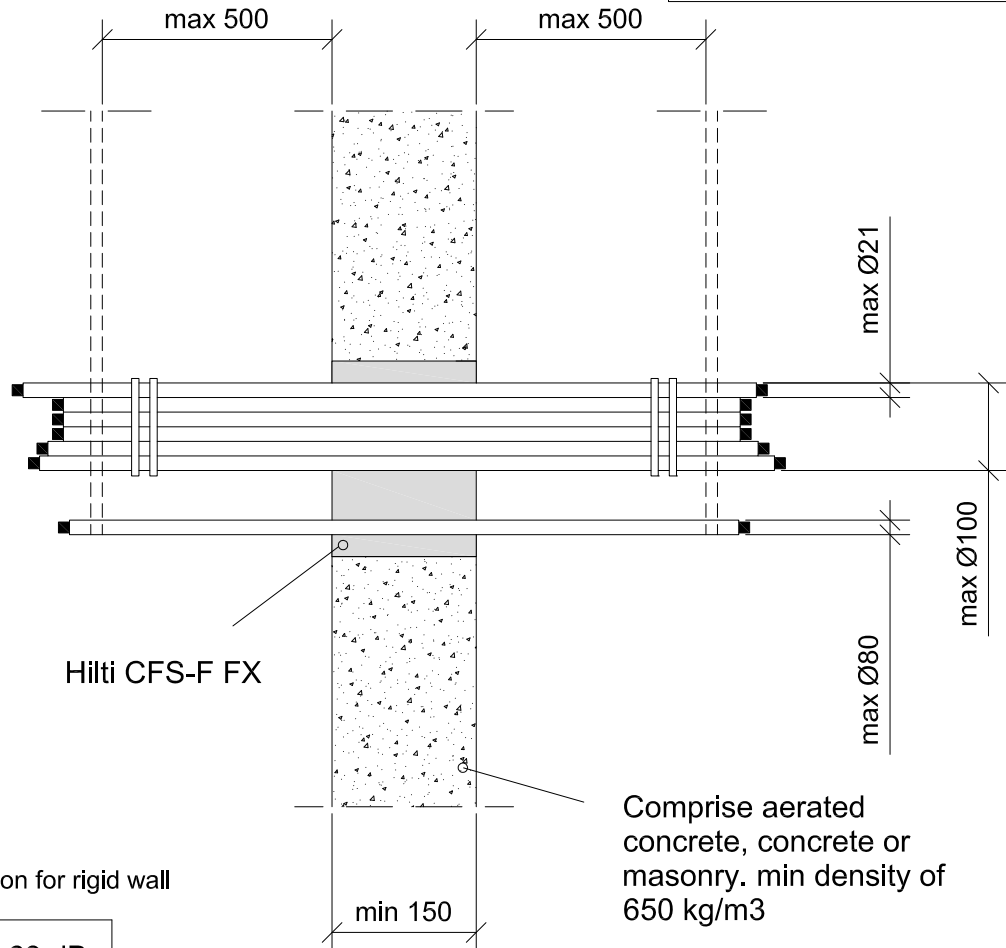
0084_01

REV 00

No scale

All units are in millimetres

Fire Rating EI 60



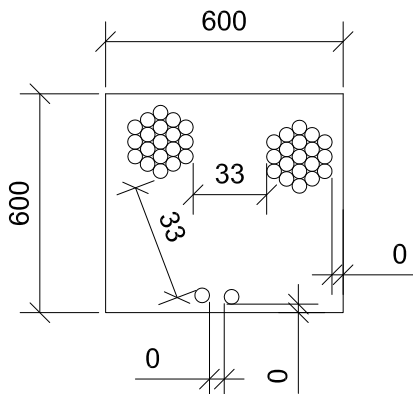
Hilti CFS-F FX

Comprise aerated concrete, concrete or masonry. min density of 650 kg/m3

Sound Insulation for rigid wall

$$D_{n,w} = 69 \text{ dB}$$

$$R_w = 61 \text{ dB}$$



- Approval ETA-10/0109 of 11/04/2014
- Reaction to fire acc EN 13501-1
- Fire resistance test acc 1366-3
- Installation according to Hilti instructions

Max. opening 600x600 or Ø 600 mm

Total amount of services(including insulation) is equal or lower than 60 % of the penetration surface.



CONTENTS

Single cables in a rigid wall

ID

CAB-RW-SG-0087

FIRESTOP FOAM

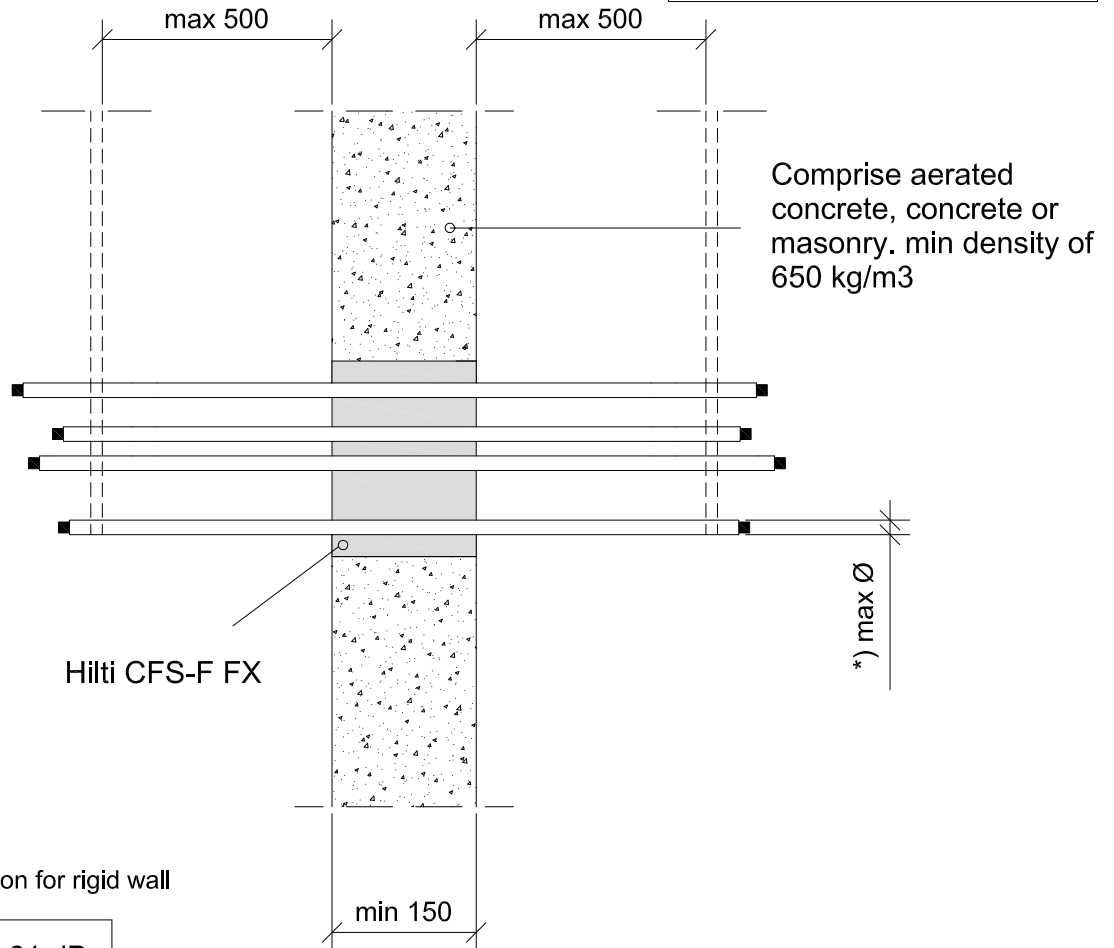
0087_01

REV
00

No scale

All units are in millimetres

Fire Rating EI 90

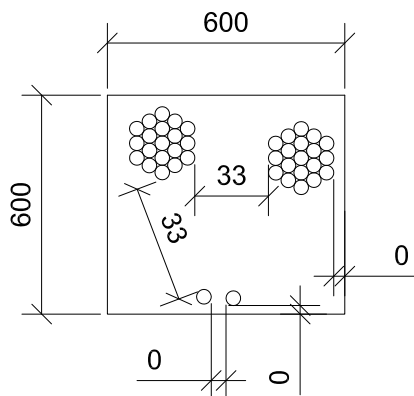


Sound Insulation for rigid wall

$D_{n,w}$	= 61 dB
R_w	= 69 dB

*) Type and Ø cables

Ø max single sheated core cable	21
Ø max single multi-core halogen free cables acc HD 604.5	50
Ø max single multi-core rubber cables acc HD 22.4	80



- Approval ETA-10/0109 of 11/04/2014
- Reaction to fire acc EN 13501-1
- Fire resistance test acc 1366-3
- Installation according to Hilti instructions

Max. opening 600x600 or Ø 600 mm

Total amount of services(including insulation) is equal or lower than 60 % of the penetration surface.



CONTENTS

Single and cable bundles in a rigid wall

ID

CAB-RW-BD-0090

FIRESTOP FOAM

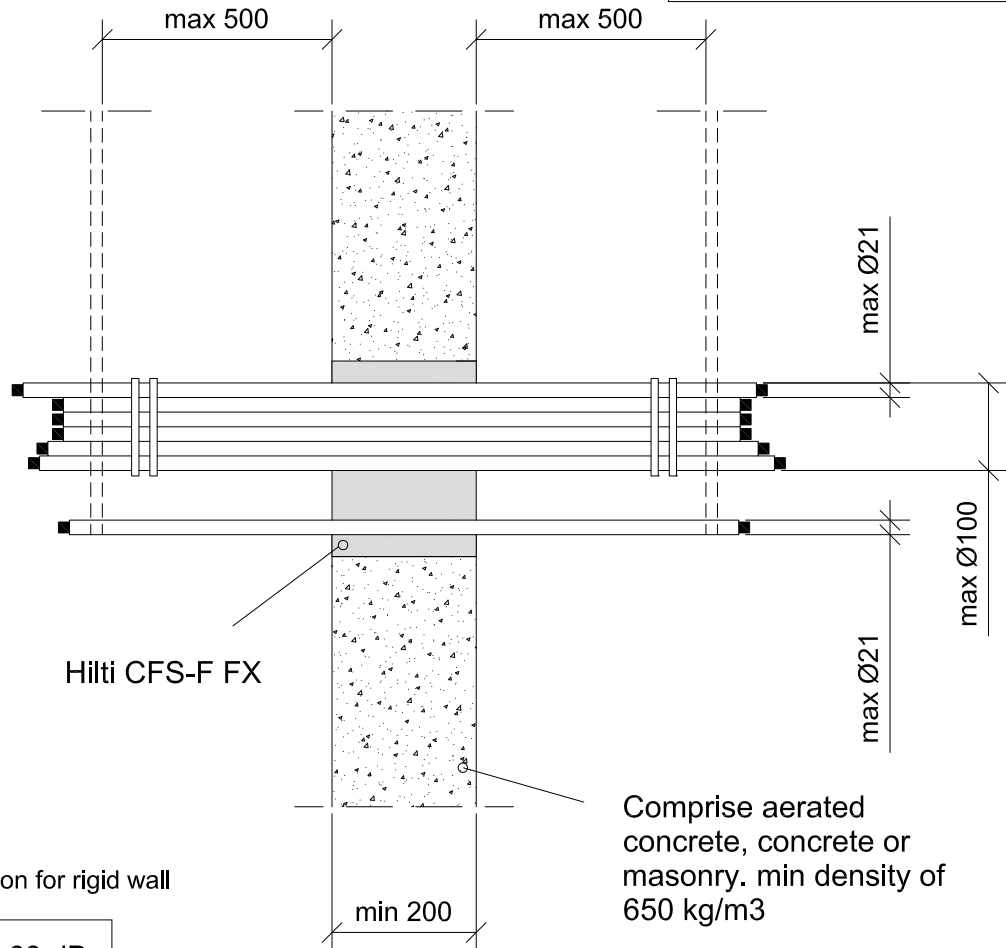
0090_01

REV 00

No scale

All units are in millimetres

Fire Rating EI 120



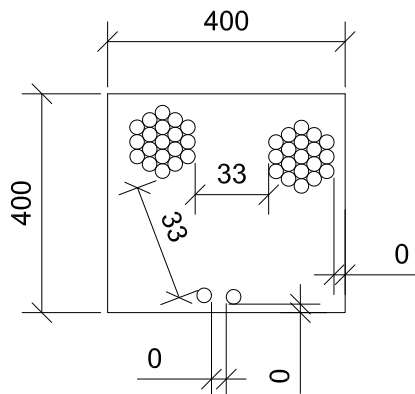
Hilti CFS-F FX

Comprise aerated concrete, concrete or masonry. min density of 650 kg/m3

Sound Insulation for rigid wall

$$D_{n,w} = 69 \text{ dB}$$

$$R_w = 61 \text{ dB}$$



- Approval ETA-10/0109 of 11/04/2014
- Reaction to fire acc EN 13501-1
- Fire resistance test acc 1366-3
- Installation according to Hilti instructions

Max. opening 400x400 or \varnothing 400 mm

Total amount of services (including insulation) is equal or lower than 60 % of the penetration surface.



CONTENTS

Single and cable bundles in a rigid wall

ID

CAB-RW-BD-0093

FIRESTOP FOAM

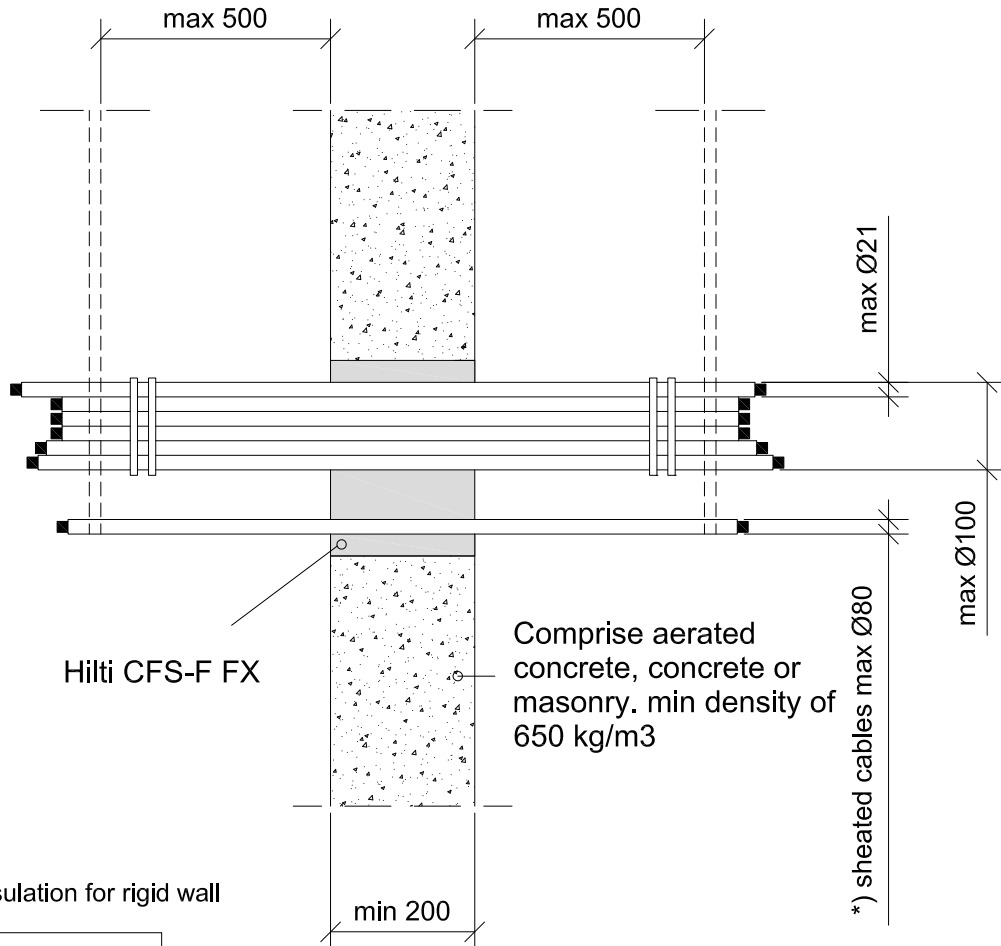
0093_01

REV 00

No scale

All units are in millimetres

Fire Rating EI 90

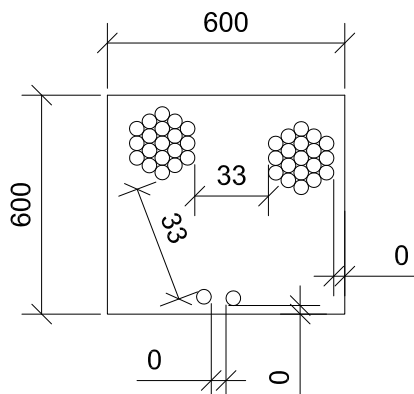


Sound Insulation for rigid wall

$$D_{n,w} = 69 \text{ dB}$$

$$R_w = 61 \text{ dB}$$

*) Valid also for all sheathed single core cables (max Ø21) and non sheathed cables (max Ø24)



- Approval ETA-10/0109 of 11/04/2014
- Reaction to fire acc EN 13501-1
- Fire resistance test acc 1366-3
- Installation according to Hilti instructions

Max. opening 600x600 or Ø 600 mm

Total amount of services(including insulation) is equal or lower than 60 % of the penetration surface.



CONTENTS

Single and cable bundles in a rigid floor

ID

CAB-RF-BD-0099

FIRESTOP FOAM

0099_01

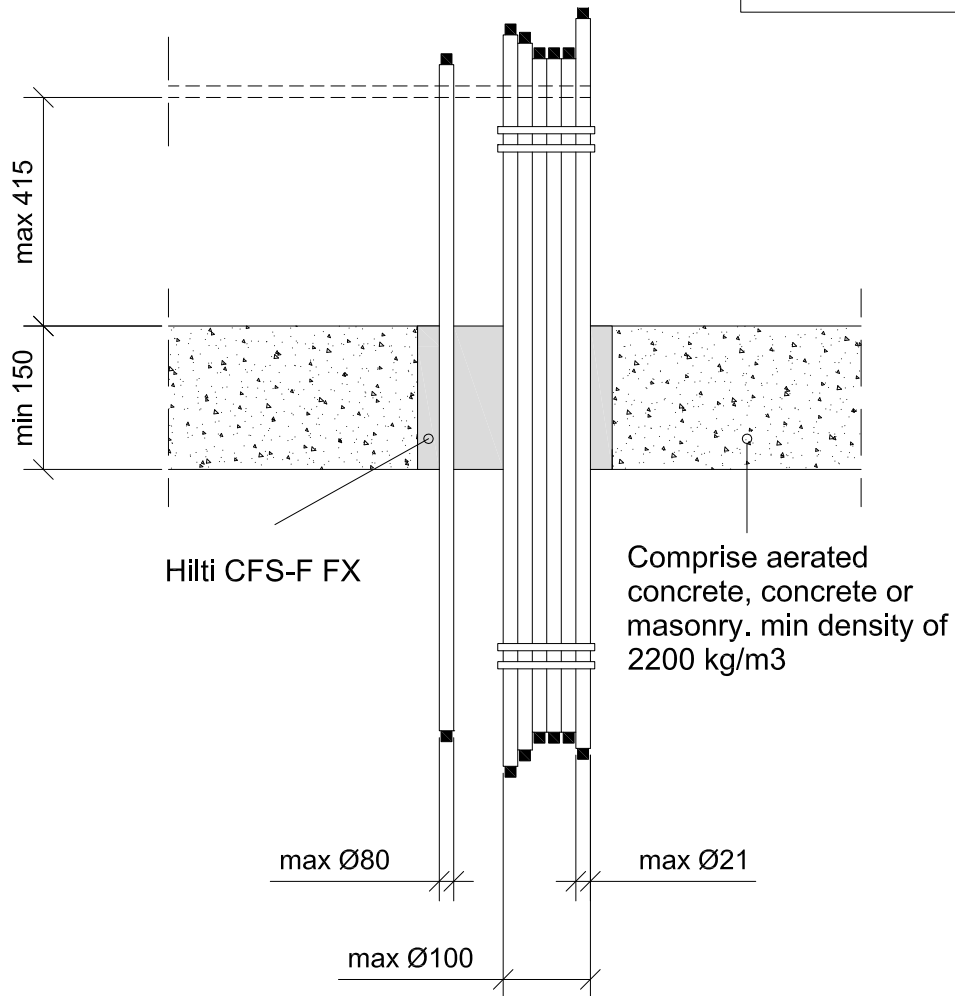
REV

00

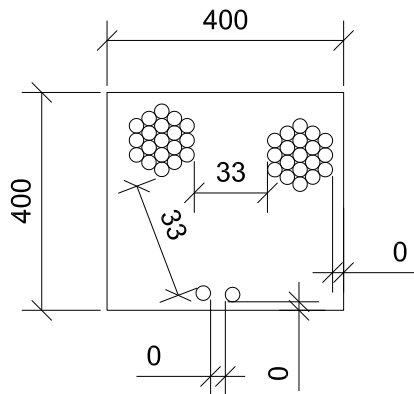
No scale

All units are in millimetres

Fire Rating EI 60



- Approval ETA-10/0109 of 11/04/2014
- Reaction to fire acc EN 13501-1
- Fire resistance test acc 1366-3
- Installation according to Hilti instructions



Max. opening 400x400 or Ø 400 mm

Total amount of services (including insulation) is equal or lower than 60 % of the penetration surface.



CONTENTS

Single and cable bundles in a rigid floor

ID

CAB-RF-BD-0105

FIRESTOP FOAM

0105_01

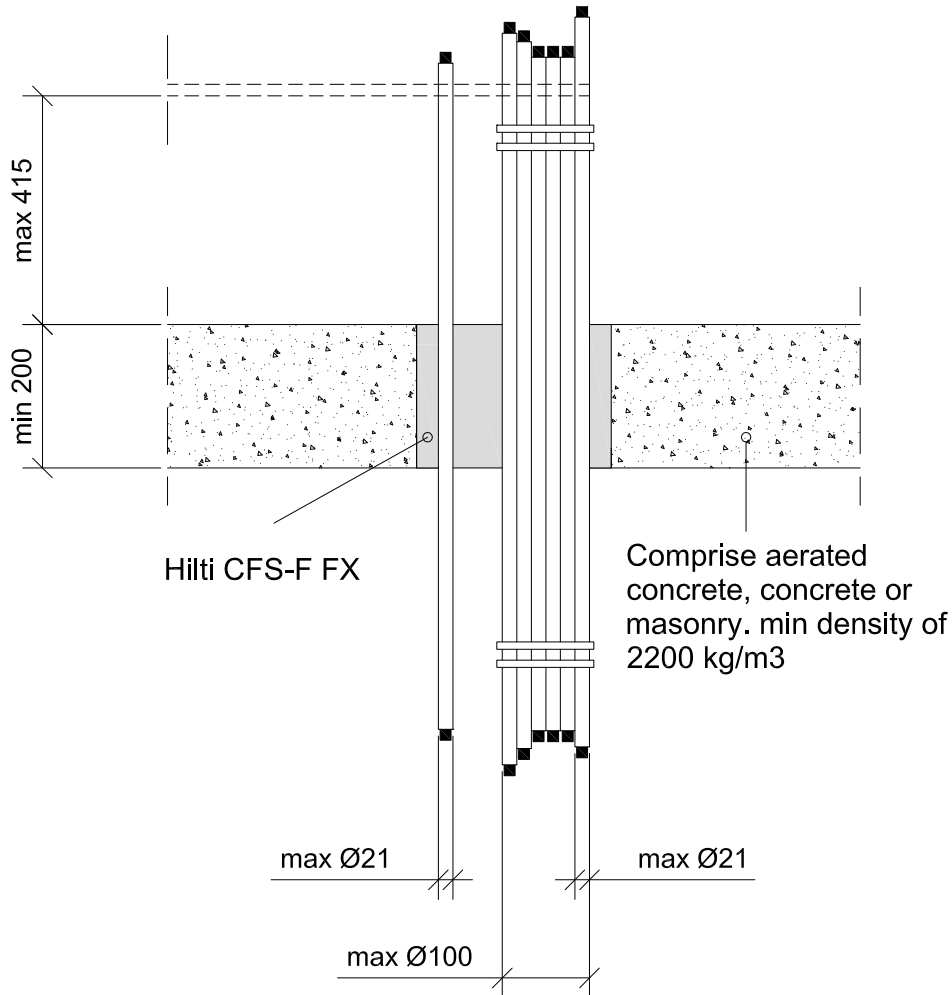
REV

00

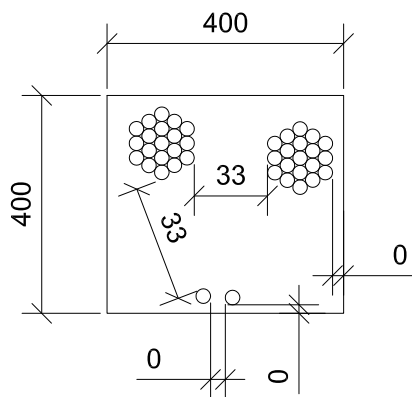
No scale

All units are in millimetres

Fire Rating EI 120



- Approval ETA-10/0109 of 11/04/2014
- Reaction to fire acc EN 13501-1
- Fire resistance test acc 1366-3
- Installation according to Hilti instructions



Max. opening 400x400 or \varnothing 400 mm

Total amount of services (including insulation) is equal or lower than 60 % of the penetration surface.



CONTENTS

Single cables in a rigid floor

ID

CAB-RF-SG-0102

FIRESTOP FOAM

0102_01

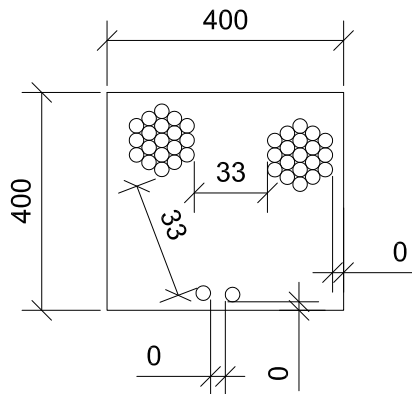
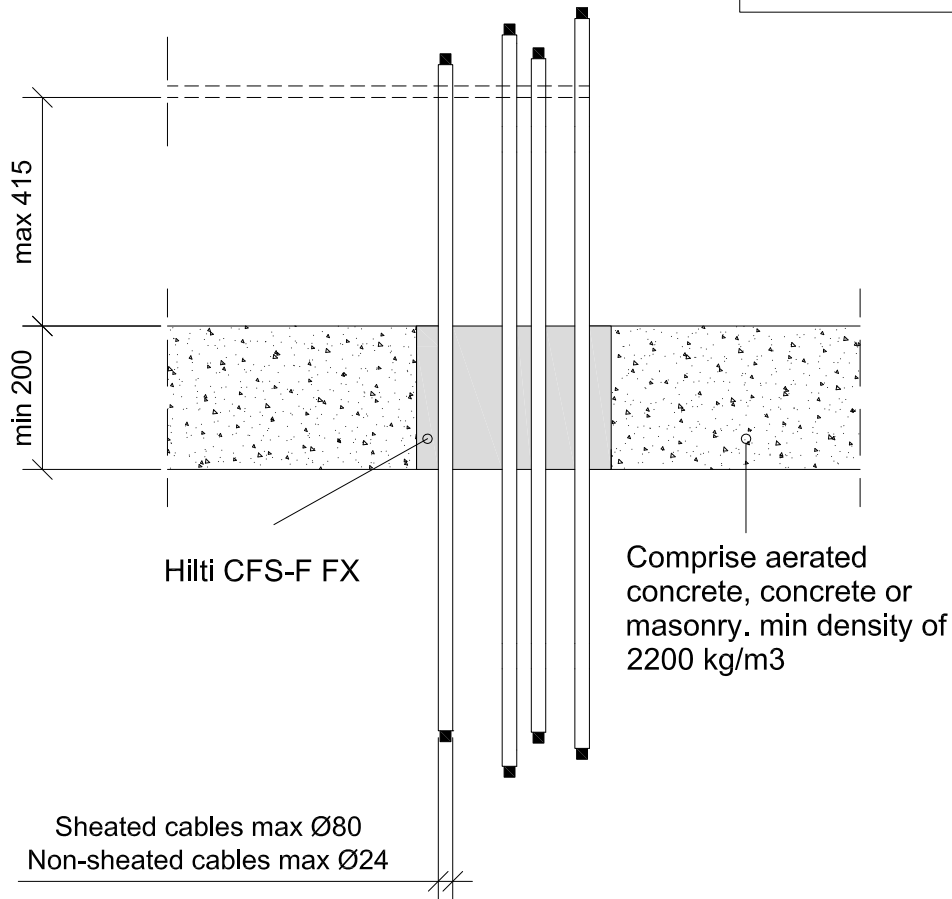
REV

00

No scale

All units are in millimetres

Fire Rating EI 90



- Approval ETA-10/0109 of 11/04/2014
- Reaction to fire acc EN 13501-1
- Fire resistance test acc 1366-3
- Installation according to Hilti instructions

Max. opening 400x400 or Ø 400 mm

Total amount of services (including insulation) is equal or lower than 60 % of the penetration surface.