



All loading and design criteria supplied by customer is assumed accurate. Only the stated Design Assumptions were considered, and must be verified by the responsible Engineer of Record (EOR). The basis of Hilti component and connection design is the published data in the current Hilti Technical Guide, including material and cross-section properties, allowable load values, factors of safety, methods of calculation, and limiting factors. The EOR must verify suitability for any specific application, and the capacity of the supportive structure to receive the shown configuration and associated reaction loads. Modification to components and/or design may alter performance and must be evaluated by the EOR.

PROJECT NAME:

CARRIL EMBEBIDO HAC

SERVICE REQUEST DESCRIPTION:

ESQUINA EN CANTO DE LOSA

DESIGNED BY: CAA

REVIEWED BY: JAB

DRAWN BY: JRS

ISSUE DATE: 25 JUL 13

REVISIONS:

NO.	DESCRIPTION:	DATE:
A	ORIGINAL ISSUE	25 JUL 13
C	REVISED TABLES AND TILE BLOCK	29 SEPT 15

SERVICE REQUEST NUMBER:

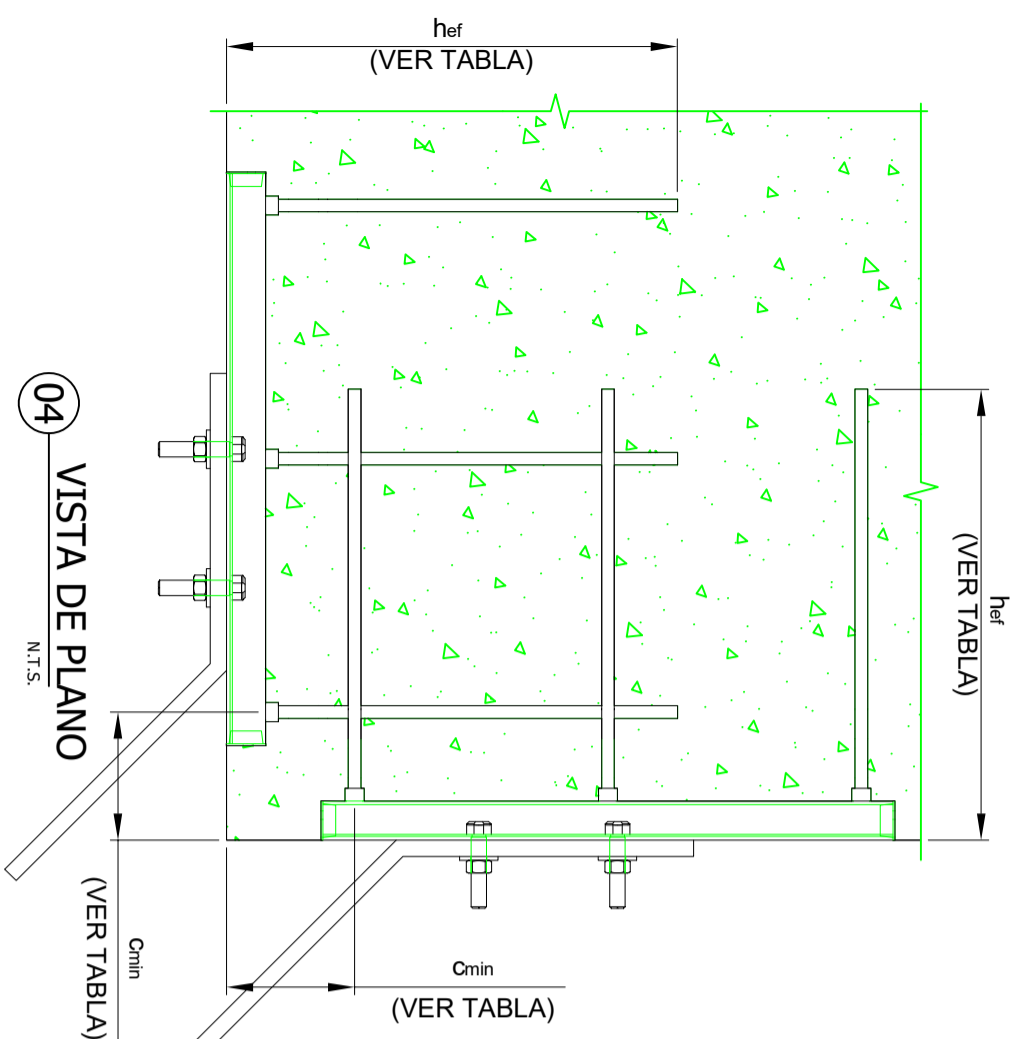
13-228

DRAWING NUMBER:

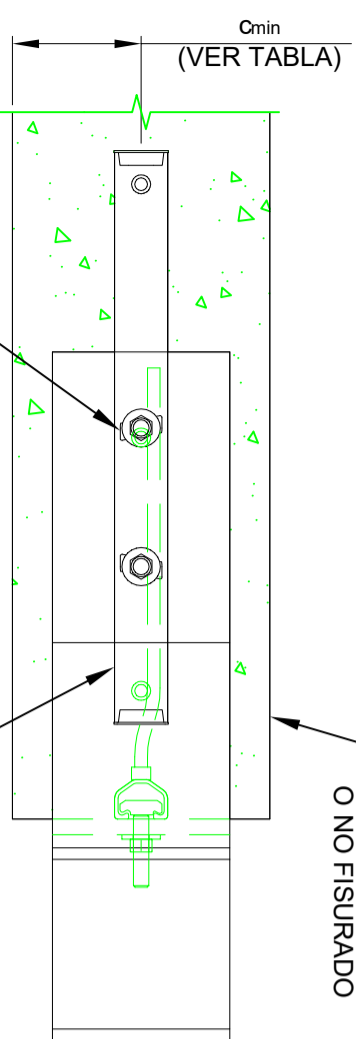
03

SHEET:

1/1



04 VISTA DE PLANO
N.T.S.



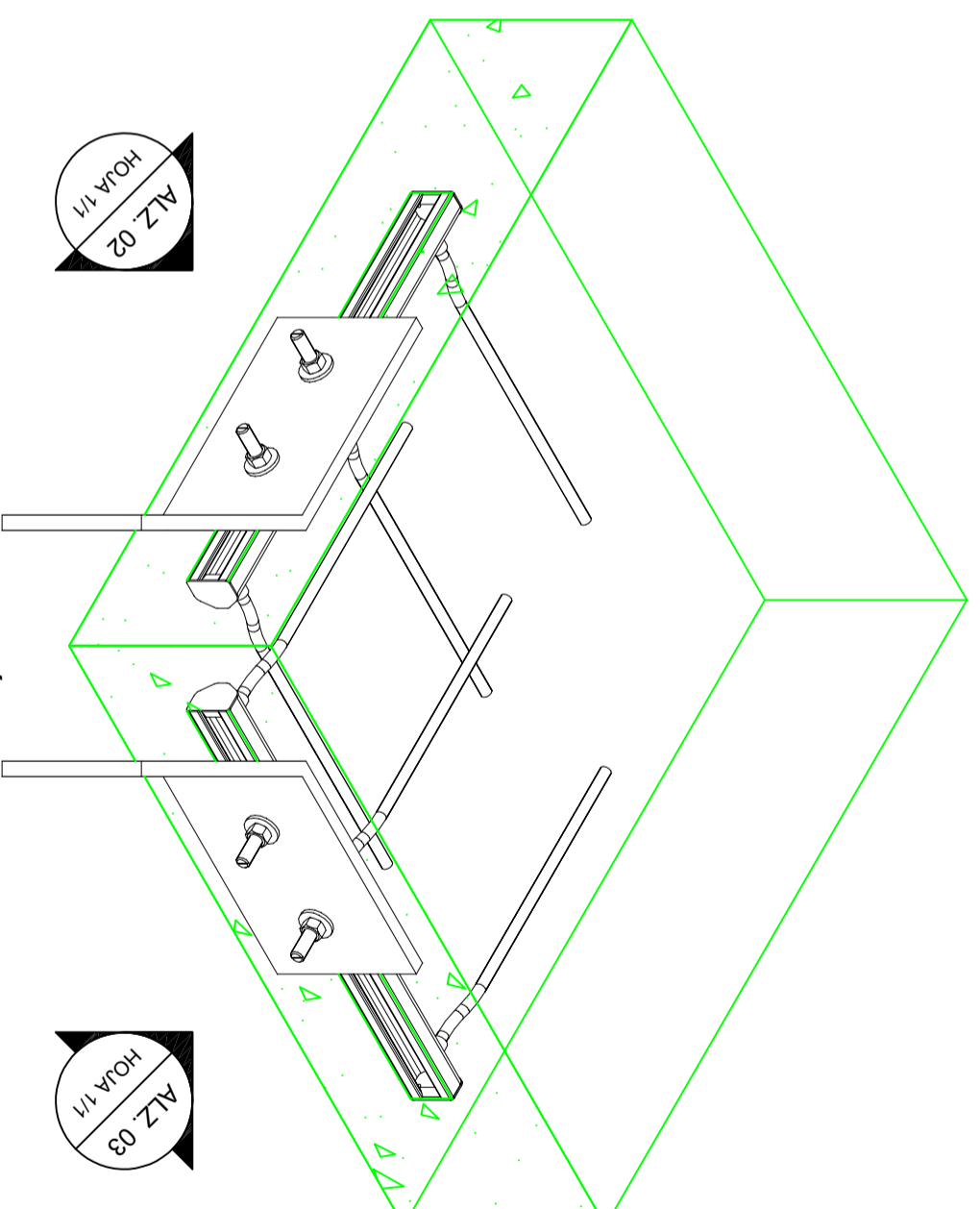
02 ALZADO
N.T.S.

TORNILLO HILTI CON CABEZA T (CON TUERCA)
HBC-C M12 O M16
HDG (F) CALIDAD 8.8

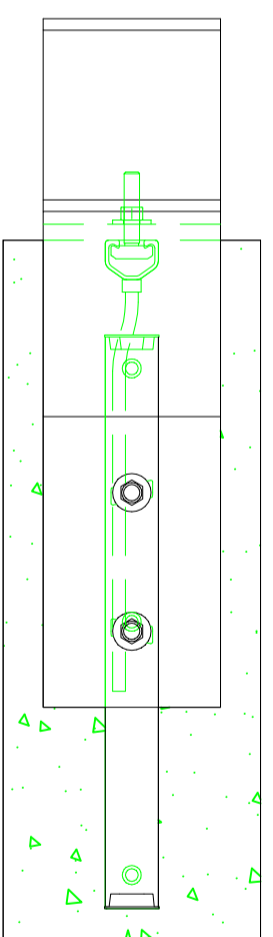
HORMIGÓN FISURADO O NO FISURADO

HDG - CARRIL EMBEBIDO HILTI, HAC (VER TABLA)

Carril Embebido	Código	Longitud	Distancia a borde mínima
Carril Embebido HAC-40 91/300 F	2107349	300 mm (12")	50 mm (2")
Carril Embebido HAC-40 91/350 F	2122493	350 mm (14")	50 mm (2")
Carril Embebido HAC-40 91/450 F	2122494	450 mm (18")	50 mm (2")
Carril Embebido HAC-50 106/300 F	2107511	300 mm (12")	50 mm (2")
Carril Embebido HAC-50 106/350 F	2122539	350 mm (14")	50 mm (2")
Carril Embebido HAC-50 106/450 F	2122540	450 mm (18")	50 mm (2")
Carril Embebido HAC-50 106/800 F	2122542	800 mm (32")	50 mm (2")
Carril Embebido HAC-60 148/350 F	431851	350 mm (14")	75 mm (3")
Carril Embebido HAC-60 148/450 F	431852	450 mm (18")	75 mm (3")
Carril Embebido HAC-70 175/350 F	431861	350 mm (14")	75 mm (3")
Carril Embebido HAC-70 175/450 F	431862	450 mm (18")	75 mm (3")



01 ISOMÉTRICO
N.T.S.



03 SECCIÓN
N.T.S.

NOTAS:

- TORNILLO CON CABEZA T PARA APLICACIONES CON FUERZA DE CORTANTE PARALELA A LA LONGITUD DEL CARRIL.
- LA ESPESOR PUEDE AUMENTAR DEPENDIENDO DEL NIVEL DE EXPOSICIÓN, EL ENTORNO CORROSIVO Y LOS CRITERIOS ESPECÍFICOS DEL PROYECTO.

Tornillo con cabeza T	Código	Espesor máxima
HBC-C M12x60 8.8F	2095646	35 mm (1-3/8")
HBC-C M16x60 8.8F	2095650	30 mm (1-1/8")